



# PROTECTIVE CLOTHING

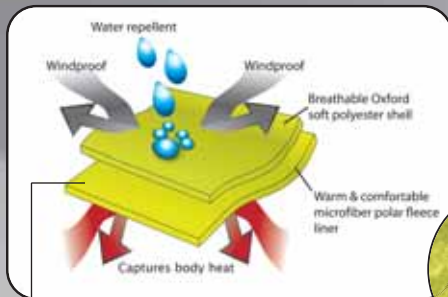


**MCR**<sup>TM</sup>  
**SAFETY**

MEMPHIS GLOVE CREWS RIVER CITY

*Exceeding Expectations...  
Protecting Your Quality of Life.*

800-955-6887  
[www.mcrcsafety.com](http://www.mcrcsafety.com)



Soft shell polyester/spandex material bonded with a micro-fiber polar fleece liner



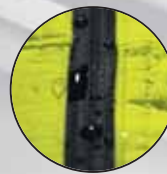
Individually packaged for retail display option



PGCL3L  
Sizes M-X4



Fleece neck storm flap



Water repellent Oxford cloth & zipper

**3M Scotchlite™**  
Reflective Material

MCR Safety's trademark to identify our high visibility PPE products



Meets ASTM E96-2005 for Breathability



Adjustable/elastic take up wrist closure

**POCKETS**  
**3-OUT**  
**2-IN**

Adjustable waist with two quick release tabs



Adjustable waist with two quick release tabs



## New Technology

- Patented Elastolite® technology first used in the backlighting of Motorola® V3 Razr® phones
- This technology enables the wearer to be visible at further distances - giving an oncoming driver greater reaction time for breaking
- Only lighted apparel technology in the industrial market that is waterproof and washable

**POCKETS**  
**2-IN**



Mesh

## EL500 STROBE LIGHT SAFETY VEST

ANSI/ISEA 107-2004 Class 2 safety vest with unique Electroluminescent (EL) blinking strobe lights on front and back for added visibility in darker environments. Flexible 100% polyester material, washable, with 4 1/2" Orange/Silver 3M™ Scotchlite™ Reflective Material. Fluorescent Lime M-X4



The vest switch has an On Lights position (shown on left) and a Strobe Lights position (shown above and right).



Strobes 3 times a second in the top front and back lights then alternates 3 times in the bottom lights. It resembles the timing of the strobes in most police cars.



**598RJH**

Sizes M-X4

**598RPW**

Contoured attached hood with drawstring and quick release stoppers



**Breathable**

Zipper front with adjustable closure storm flap

MCR Safety's trademark to identify our top of the line PPE



Waterproof polyester shell with a soft inner polyester lining. Meets ANSI CLASS 3

Reflexite® micro-prismatic retro-reflective material

Thick, durable elastic waist

Adjustable drawstring closure quick release stopper

**POCKETS**  
**3-OUT**

Rear zipper pocket with adjustable closure storm flap



**Breathable**

Waterproof polyester shell with a soft inner polyester lining. Pants meets ANSI CLASS E

Reflexite® micro-prismatic retro-reflective material

Take-up snaps



Expandable, zipper ankle gussets

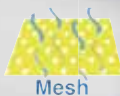
Elastic wrist with adjustable closures

Adjustable drawstring closure with quick release stoppers

Double stitched and taped seams

**POCKETS**  
**2-OUT**  
**1-IN**

**POCKETS**  
**1-OUT**  
**2-IN**



Mesh



**CL2MLPFR**

Limited flamability, tested in accordance with ASTM D-6413-08 and NFPA 701. Class 2, 100% Polyester Mesh Safety Vest, 5 Point Tear Away. 2" Silver 3M™ Scotchlite™ Reflective Material. Fluorescent Lime M-X4



**POCKETS**  
**2-IN**



Mesh

**WCCL2LFR**

Limited flamability, tested in accordance with ASTM D-6413-08 and NFPA 701. Class 2, 100% Polyester Mesh Safety Vest with Dielectric Zipper Front Closure. 4 1/2" Orange/Silver 3M™ Scotchlite™ Reflective Material. Fluorescent Lime M-X4

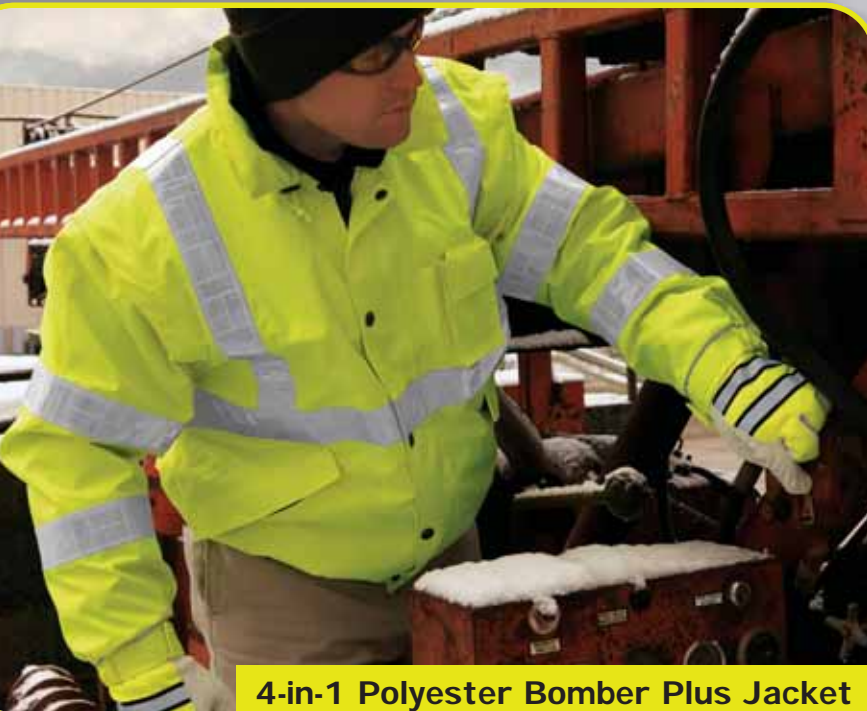


**WCCL2OFR** Fluorescent Orange M-X4



= Limited Flamability  
ASTM D-6413-08





**4-in-1 Polyester Bomber Plus Jacket**

POCKETS  
3-OUT  
2-LINER

POCKETS  
2-OUT

POCKETS  
3-OUT

POCKETS  
3-OUT



**BPCL3L**

Class 3, 4-in-1 Polyester Bomber Plus Jacket, zip out fleece liner, detachable zip off outer sleeves, roll-up hood, elastic/adjustable closure cuff, 2" white Reflexite® reflective material.

Fluorescent Lime L-X4



BMRCL3LP

POCKETS  
3-OUT

BMRCL3L

POCKETS  
3-OUT  
2-IN



POCKETS  
2-OUT



**PFCL3L**

Class 3, 100% Polyester, Polar fleece insulated "hoodie" style jacket, zipper front, attached drawstring hood, 2 front pockets, 2" Silver 3M™ Scotchlite™ Reflective Material Fluorescent Lime S-X6

**5933 SUIT**

2 piece suit constructed of tough breathable .30mm polyester/polyurethane material with double stitched and taped seams. Limited flamability tested in accordance with ASTM D-6413-08.

Features zip in, zip out fleece liner for warmth and tuck away hood. Elastic waist pant, expandable ankle gussets. M-X4 Navy Blue



POCKETS  
2-OUT  
2-LINER

POCKETS  
2-OUT

**BMRCL3L**

Class 3, Bomber Style Insulated Jacket, zipper front closure covered by snap storm fly, roll-up hood, elastic cuff with adjustable closure take-up, 2" Silver 3M™ Scotchlite™ Reflective Material

Fluorescent Lime L-X4

**BMRCL3LP** Matching Bomber Pants, Insulated, Elastic Waist, ANSI Class E. Fluorescent Lime L-X4



Breathable





Mesh



Mesh

POCKETS  
1-OUT  
1-IN



All Class 2 and 3 vests are attractively packaged for POP display.



5-point tear-away with closures on sides

## CL2ML



Class 2, 100% polyester mesh Safety Vest, 5-point tear-away with closures on sides, shoulders and front. 2" 3M™ Scotchlite™ Reflective Material.

Fluorescent Lime M-X4

CL2MO Fluorescent Orange L-X4

## CL2MLP



Class 2, 100% Polyester Mesh Safety Vest with Dielectric Zipper Front Closure, 2" 3M™ Scotchlite™ Reflective Material, Fluorescent Lime M-X4

CL2MOP Fluorescent Orange M-X4



Mesh

POCKETS  
2-IN



Mesh

POCKETS  
2-IN



POCKETS  
1-OUT

## CL2MOV



Class 2, 100% Polyester Mesh Safety Vest with dielectric zipper front closure. 2" Lime Vinyl 3M™ Scotchlite™ Reflective Material.

Fluorescent Orange M-X4

## WCCL2L



Class 2, 100% Polyester Mesh Safety Vest with zipper front closure, 4 1/2" Orange/Silver 3M™ Scotchlite™ Reflective Material. Fluorescent Lime M-X4

WCCL2O 4 1/2" Lime/Silver 3M™ Scotchlite™ Reflective Material. Fluorescent Orange M-X4

## TSCL2L



Class 2, Solid 100% Polyester T-Shirt, 2" Silver 3M™ Scotchlite™ Reflective Material.

Fluorescent Lime M-X4

TSCL2O Fluorescent Orange M-X4



POCKETS  
4-OUT  
2-IN



POCKETS  
2-IN



POCKETS  
4-OUT  
2-IN

Mesh Back

## SURVO



Class 2, Solid 100% Polyester Surveyor Vest, zipper front closure. 3" Lime/Silver 3M™ Scotchlite™ Reflective Material.

Fluorescent Orange M-X4

SURVL 3" Orange/Silver 3M™ Scotchlite™ Reflective Material; Fluorescent Lime M-X4

## VA22OR



Class 2, Solid 100% Polyester Safety Vest, zipper front closure. 1 3/8" white Reflexite® Reflective material.

Fluorescent Lime L-X4

VA221R 1 3/8" Lime Reflexite®. Fluorescent Orange L-X4

## CL20C



Class 2 100% Polyester Safety Vest with Solid Front and Mesh Back, Dielectric Zipper Front Closure. 2" Silver 3M™ Scotchlite™ Reflective Material.

Fluorescent Orange L-X4

CL2LC Fluorescent lime M-X4

Mesh Back



**EL500**

Class 2 Safety Vest with Eluminescent flashing strobe lights. 100% polyester mesh with zipper front, 4 1/2" orange/silver 3M™ Scotchlite™ Reflective Material.

AAA battery pack included.  
Fluorescent Lime M-X4

**3M Scotchlite™**  
Reflective Material

POCKETS  
2-IN



**CL3ML**

Class 3, 100% Polyester Mesh Safety Vest with adjustable front closure.  
2" Silver 3M™ Scotchlite™ Reflective Material.  
Fluorescent Lime L-X4

POCKETS  
1-OUT  
1-IN



**VCL2ML**

Class 2, 100% Polyester Mesh Safety Vest,  
2" Silver 3M™ Reflective Fabric.  
Fluorescent Lime M-X4

**VCL2MLZ** Zipper Front Closure,  
2" Silver 3M™ Reflective Fabric.  
Fluorescent Lime M-X4



**WCCL30**

Class 3, 100% Polyester Mesh Safety Vest with Zipper Front Closure,  
3" Lime/Silver 3M™ Scotchlite™ Reflective Material.

Fluorescent Orange L-X4

**WCCL3L** 3" Orange/Silver 3M™ Scotchlite™ Reflective Material  
Fluorescent Lime L-X4

POCKETS  
2-OUT  
2-IN



**VCL2SL**

Class 2, Solid 100% Polyester Safety Vest with adjustable front closure.

2" Silver 3M™ Reflective Fabric.  
Fluorescent Lime L-X4



**VCL3SL**

Class 3, Solid 100% Polyester Safety Vest with adjustable front closure.

2" Silver 3M™ Reflective Fabric.  
Fluorescent Lime L-X4

POCKETS  
2-OUT  
1-IN

3M™ and Scotchlite™ are trademarks of 3M™



**HS201V**

Economy Surveyor Vest, 100% Polyester, Hybrid Half Mesh/Half Solid Polyester Fabric, Zipper front closure, Fluorescent Orange with vinyl white/lime Meillite® reflective material.  
**HS200V** Fluorescent Lime M-X4

**ICV203**

Cotton/Polyester vest with adjustable closure tab front and elastic side straps. 1" white vinyl reflective material. Front and back slot to insert interchangeable title information.

**ICV203** Blue One Size: 21"x48"  
**ICV204** Red One Size: 21"x48"  
**ICV207** Black One Size: 21"x48"  
**ICV208** Green One Size: 21"x48"

**PSV200**

Public Safety Vest Meets ANSI 207-2006 Standard, Tear Away, Polyester Mesh with tear-away sides and front closure. 2" Silver 3M™ Scotchlite™ Reflective Material. Solid panel on back for logo imprint.  
 Fluorescent Lime M-X4

**V200**

Polyester mesh vest with adjustable tab closure and elastic side straps.  
 Lime One Size 18" x 47"  
**V201** Orange

**V201R**

Polyester mesh vest adjustable tab closure and elastic side straps. 2" lime/silver reflective material.  
 Orange One Size 18" x 47"

**V211R**

Polyester mesh vest adjustable tab closure and elastic side straps. 3/4" lime reflective material.  
 Orange One Size 18" x 47"  
**V211RXL** Extra Large version of V211R 26" x 60"

**CHEV2L**

Tear-away polyester mesh vest with 360° of reflective protection, 3 chevron designs on back and adjustable tear-away closures on front and shoulders. 1 3/8" white reflective material. Lime One Size 19" x 54"

**CHEV20T**

Polyester mesh vest with 360° of reflective protection, 3 chevron designs on back and adjustable tear-away closures on front and shoulders. 1 3/8" white reflective material. Orange One Size 19" x 54"





POCKETS  
2-OUT

## 201CL3 49" COAT

49" Coat meets ANSI/ISEA 107-2004 Class 3 standards for Hi-vis apparel. .35mm PVC/Polyester material features 2" Silver 3M™ Scotchlite™ Reflective Material trimmed with 1/4" lime striping. Coat with detachable hood features stripes over shoulders and around chest, sweep and arms.

**S-X4 Fluorescent Orange**

**2013CL3** Matching ANSI Class 3, three-piece suit.



POCKETS  
2-OUT

## 2013R SUIT

3 piece Luminator suit constructed of .35mm PVC coated polyester; jacket features a detachable hood, covered patch pockets and a 2" silver/lime Reflective Material around chest, waist and arms. Bib overalls feature a snap fly, partial elastic suspender, and reflective material around the knees.

**S-X6 Fluorescent Orange**

**201CR 49" Coat S-X4**



## 500RJH JACKET

.16mm Polyester/PU Material, meets ANSI Class 3 Standards, 2" Silver 3M™ Scotchlite™ Reflective Material, attached hood  
**S-X4 Fluorescent Lime**



## 500RPW PANTS

Matching Elastic Waist Pant, Meets ANSI Class E Standards, 2" Silver 3M™ Scotchlite™ Reflective Material  
**S-X4 Fluorescent Lime**



POCKETS  
2-OUT

## 5182 SUIT

Limited flamability, tested in accordance with ASTM D-6413-08 and NFPA 701. 2 Piece Luminator suit meets ANSI/ISEA 107-2004 Class 3 Standards for Hi-Visibility. .40 mm Stretch PU on a Knitted Cotton/Poly Backing. 2" Silver 3M™ Scotchlite™ Reflective Material, Zipper Front with Tuck-Away Hood, 2 Front Pockets. Elastic Waist Pants Meet ANSI Class E Standards, Expandable Zippered Ankle Gussets.

**M-X4 Fluorescent Lime**



## CLASSIC

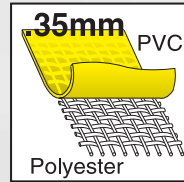


### 2403R SUIT



3 piece suit constructed of .35mm PVC coated polyester. Jacket features detachable hood and 1 3/8" silver Reflective Material around the arms, body of the jacket and across the shoulders. Jacket features comfortable corduroy collar. Bib pants feature a fly, and Reflective Material around the legs.

Yellow S-X4



### FEATURES

- .35mm PVC on polyester fabric
- Long term durability
- Well suited for a wide variety of job applications
- Soft fabric
- Most popular garment in the industry

### 2003 SUIT

Complete 3 piece suit; jacket, detachable hood and bib pants.

S-X7 Yellow

2013 S-X3 Fluorescent Orange

2083 S-X3 Fluorescent Green

### 200C RAINCOAT

49 inch raincoat with cape-vented back, underarm air vents, 2 patch pockets and detachable hood.

S-X6 Yellow

201C S-X3 Fluorescent Orange



**FR2003** Same as 2003 but limited flamability, tested in accordance with ASTM D-6413-08 and NFPA 701. M-X7 Yellow

### 200BP BIB PANTS

Bib pant with snap fly front.

S-X6 Yellow

### 200J JACKET

Jacket with detachable hood.

S-X6 Yellow

### 2903 SUIT

Complete 3 piece suit; jacket with detachable hood and elastic waist pants.

S-X4 Yellow



### 340J JACKET



.28mm PVC/Nylon/PVC material.

Limited flamability, tested in accordance with ASTM D-6413-08 and NFPA 701.

Jacket features detachable hood, 1 1/2" Reflective Material around bottom of jacket and over the shoulders.

L-X3 Yellow

**340BP** Bib pants with fly front and Reflective Material around the ankles.

S-X3 Yellow



POCKETS  
2-OUT

### 7368CR COAT



49" coat, reversible lime to black constructed of .54 mm fabric including nylon, two layers of PVC, and another layer of nylon with 2 inch silver 3M™ Scotchlite™ Reflective Material.

S-X3 Lime

7368C without Reflective Material S-X3

## DOMINATOR



### 3882 SUIT

Complete 2 piece suit; jacket with an attached hood, inner sleeve and bib pants.  
S-X7 Green

### 3881 COVERALL

One piece coverall features zipper front with double storm flap, attached hood with drawstring closure, 10" x 10" reinforced crotch and inner sleeves with elastic wrist closure.  
S-X5 Green

3981 S-X4 Inner Pant Cuffs

2981 S-X4 Inner Pant Cuffs

PVC/Polyester

(2981) Not limited flammability.

### 388J JACKET

Jacket with a detachable hood, double enclosed zipper front and inner sleeves with elastic wrist closure. S-X3 Green

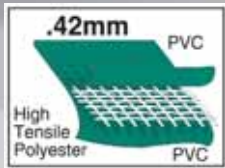
388JH S-X5

Attached Hood

### 388BF BIB

Bib pants, no fly, 10" x 10" reinforced crotch full elastic suspenders.  
S-X5 Green

398BF M-X3 Inner Pant Cuff

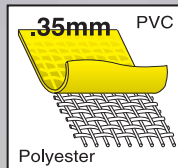


### FEATURES

#### Dominator

- Specially designed Hi-Tensile strength polyester double coated with 2 thick layers of PVC for a combined thickness of .42mm
- Limited flammability, tested in accordance with ASTM D-6413-08 and NFPA 701.
- Roomy construction
- Best protection against many chemicals and acids

## CLASSIC PLUS



### FEATURES

- Excellent value
- Versatile, good for outdoor and indoor use
- Corduroy lined collar for comfort
- Available in many colors  
.35mm PVC on polyester broadloom fabric

### 2403 SUIT

Complete 3 piece suit; jacket with corduroy collar, cape-vented back and detachable hood;  
bib pants.

S-X4 Yellow

2413 S-X5 Orange

2433 S-X3 Blue

2473 S-X3 Black

240J JACKET S-X3 Yellow

### 240C RAINCOAT

49 inch raincoat with corduroy collar, cape-vented back, 2 slash, reach through pockets, badge tab and detachable hood.

S-X6 Yellow; 247C S-X6 Black

### 260C RAINCOAT

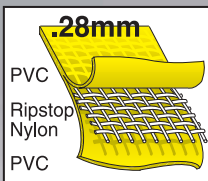
60 inches long, 2 inner leg snaps which form chaps, unisex front closure snaps, corduroy collar with snaps, badge holder, cape-vented back, detachable hood and one inside and one outside pocket.

S-X5 Yellow

267C S-X5 Black



## WIZARD



### FEATURES

- Double coated PVC over 210 denier nylon scrim material
- "Rip-Stop" material provides excellent resistance to snags and tears
- Limited flammability, tested in accordance with ASTM D-6413-08 and NFPA 701.
- Protects against most chemicals, oils & acids
- Available with stitched and taped seams  
.28mm PVC/Nylon/PVC

### 3003 SUIT

Complete 3 piece suit; jacket with detachable hood and bib pants.  
S-X7 Yellow

### 300J JACKET

Jacket with detachable hood.  
S-X5 Yellow

300JH S-X3 Attached Hood

## TYVEK®

### FEATURES

- Inherent barrier protection against dry particulate hazards.
- Even after abrasion, stops microporous particles better than other reusable garments.
- The best balance of protection, durability and comfort.

### TY120S

Coverall with collar. Zipper front, open sleeves and ankles. No hood or boots. Serged seams. White M-X4 25/case

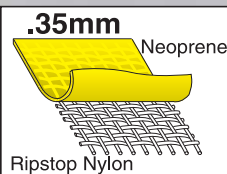
## COVTECH™

### CT365PHE

CovTech™ White Coverall with elastic sleeves & ankles, attached hood.  
White S-X4



## CONCORD



### FEATURES

- Premium quality neoprene with a single coat over nylon fabric base
- Limited flammability, tested in accordance with ASTM D-6413-08 and NFPA 701.
- Double stitched and taped seams
- Quick release suspenders
- Offers excellent resistance to most chemicals, oils, and acids  
.35mm neoprene/nylon

### 800BP BIB PANTS

Snap fly front.  
S-X3 Yellow

### 800BF BIB PANTS

No fly front.  
S-X5 Yellow

### 800CN COAT

49 inch raincoat, no hood, snaps for hood attachment.  
M-X4 Yellow

### 800JH JACKET

Jacket with attached hood and snap storm fly front.  
S-X5 Yellow

### 800JN JACKET

Jacket, no hood, snap storm fly front, and snaps for hood attachment.  
S-X4 Yellow

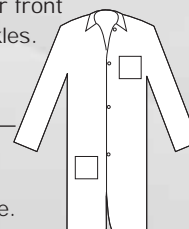
## POLYPROPYLENE

### 12WPC COVERALLS

Coverall features a zipper front with open wrists and ankles.  
White M-X3

### 12WPL LAB COAT

Coat features turn down collar, open sleeves, two pockets and snap closure.  
25/case  
White, S-X4



12WPL

### FEATURES

- 1.25 oz. Polypropylene
- Excellent for splash protection from water and non oil based liquids
- Breathable comfort and ease of disposal
- Serged seams
- Sold in case lots





**38142**

## Leather Bib Apron

Riveted in all major stress points. Large front chest pocket. "D" Ring to hold accessories. Crossed back straps with quick release buckle.

38142	24" x 42"
38130	24" x 30"
38136	24" x 36"

## Leather Waist Apron

Heavy duty adjustable waist strap with quick release buckle.

38318	24" x 18"
38324	24" x 24"

**38525**

## Leather Rod Holder

Reinforced Bottom Spring Clip



**38418**

Leather Sleeve 18" Length  
Protects above elbow down to wrist. Adjustable take up snaps at both ends of sleeve for snug fit.



## Leather Sleeve with Support Strap

Leather protects top of shoulder down to wrist. Adjustable wrist snaps for snug fit. Support sling has adjustable strap with quick release buckle.

38423	23" Length
38425	25" Length

## Limited Flamability



**39030**

Limited Flamability Cotton Jacket  
Anodized snap button front. Snap sleeves for snug fit. Large inside pocket. Soapstone shoulder pocket.

39030	30" L, M, S, XL, XXL, XXXL
39045	45" L, XL

- Limited flamability, tested in accordance with ASTM D-6413 and NFPA 701.
- 100% 9oz. cotton, breathable and lightweight.
- Washable: maintains flame resistance up to 50 home washings and 25 commercial washings up to 165°F.

**39418**

Limited Flamability Cotton Sleeve 2 1/4" heavy duty elastic at top and wrist.

39418	18" Sleeve
39423	23" Sleeve



Indura® is a 9 oz, 100% cotton material and is therefore a remarkably soft and breathable offering for all day, all weather comfort. It offers multipurpose

protection from electrical arc flash, flash fire, molten ferrous metal, and welding exposures.

Applications may include electrical maintenance, electric and gas utilities, oil, gas, petrochemical, chemical, military and ferrous metals industries. Indura® is not designed for use as primary protective clothing, such as firefighter turn out gear, aluminized suits, etc.

**WT1031**



- Meets NFPA 2112 standard on flame-resistant garments
- Meets NFPA 70E Hazard Risk Category 2 (HRC2)
- ASTM F1506 Arc Thermal Performance Tested
- ATPV = 11.5 cal/cm sq \*
- Leaf collar
- Stitched Seams bar tacked at stress points
- Elastic Waist for freedom of movement
- Roomy, expanding back design for comfort and roominess
- Zipper front with non-sparking snaps on front, wrist, and lapel
- 2 chest pockets, 2 waist pockets, 2 reach through/hip pockets, 1 tool/ruler pocket



**S-X6 Navy Blue**

\* All ATPV results based on independent tests conducted at Kinectrics per ASTM F1959.



## BBS160

16 inch over the sock, 100% waterproof boot is constructed of durable Polyurethane material that provides a high resistance to chemicals while providing exceptional shock absorption, insulation, and softness. Steel toe meets ASTM F2412-05 and F2413-05 requirements, offers protection against impact and falling objects. Features cleated sole for excellent grip and slip resistance, polyester liner and kick off lug for ease in putting on and taking off. Anti-Fungus and Anti-Bacteria treated.

Color: Brick with Beige outsole

Sizes available 5-14

5 pairs / case

**BBP160** – Same as BBS160 with Plain Toe.

## BGS160

16 inch over the sock, 100% waterproof boot is constructed of durable Polyurethane material that provides a high resistance to chemicals while providing exceptional shock absorption, insulation, and softness. Steel toe meets ASTM F2412-05 and F2413-05 requirements, offers protection against impact and falling objects. Features cleated sole for excellent grip and slip resistance, polyester liner and kick off lug for ease in putting on and taking off. Anti-Fungus and Anti-Bacteria treated.

Color: Blue with Gray outsole

Sizes available 5-14

5 pairs / case

**BGP160** – Same as BGS160 with Plain Toe.



## BYR100

17 inch over the shoe, 100% waterproof boot is constructed of flexible rubber material. Features an adjustable top strap with buckle for better fit. Inside cotton liner allows for ease in putting on and taking off. Cleated ripple soles provide additional grip and slip resistance. Excellent for moderate chemical resistance, construction and concrete work and general wet applications.

Color: Yellow with Black outsole

Sizes Available 7-16

10 pairs / case



## PBS120

16 inch over the sock, 100% waterproof boot is constructed of heavy duty flexible PVC for comfort and excellent abrasion resistance. Steel toe meets F2413-05 requirements, offers protection against impact and falling objects. Features cleated sole for excellent grip and slip resistance, polyester liner and kick off lug for ease in putting on and taking off. Insoles made of foam EVA for comfort.

Color: Black with Black outsole

Sizes 5-14.

10 pairs / case

**PBP120** – Same as PBS120 with Plain Toe.

